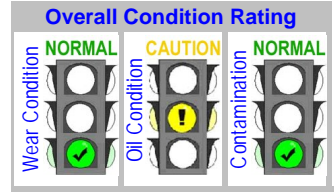


C Code : **25046**  
 U Name :  
 S  
 T  
 O Address : 108 Moo 2, Vibhavadi-Rangsit Road  
 M Chatuchak Bangkok 10900  
 E  
 R Site :  
 Location :  
 Test code : 804 907

Unit ID : **T250 CNG LUX AT**  
 Unit Type : Engine NGV Spark  
 Unit Make : CHEVROLET  
 Unit Model : OPTRA CNG 1.6L  
 Oil type / Viscosity : GM TECH SSS SAE 5W40  
 Oil System Capacity : 3.8 Liters



**Notes (Finding, Evaluation, Interpretation, Suggestion and Recommendation)**

All other wear tests and oil condition tests appear satisfactory, and the oil was still serviceable at the time of sampling.  
 All contaminant conditions and contaminant levels appear in normal ranges.  
 Unable to provide accurate data interpretation without new oil baseline data. Please submit sample of this type of new oil.

Somchai J / Andy Silton

			Current Sample			Previous Sample			Baseline and Alarm Limit										
Condition History			Wear	Oil	Cont.	Wear	Oil	Cont.	Wear	Oil	Cont.	Alarm Limit							
Lab ID			(N)	(C)	(N)	(N)	(C)	(N)	(C)	(C)	(N)	Engine NGV General SAE 10W40							
Bottle ID			145662			141295			139528			Alarm Limit Matrix -Set Name (Equipment type / oil type)							
Date Sampled			921428			889798			889802			Engine NGV General SAE 10W40							
Oil Hours (Kms)			06-Oct-10			02-Aug-10			12-Jul-10			RDE fine RFS coarse							
Unit Hours (Kms)			10390 kms			Not Given		*	12813 kms			Reference Oil	U-Caution	U-Warning	U-Caution	U-Warning			
Oil Added (Liters)			48784 kms			9706 kms			28500 kms			>80	>125	>20	>30				
Filters Hours (Kms)												>8	>13	>1	>2				
Wear Condition												RDE fine				RFS coarse			
Wear Element	Method	Unit	RDE fine	RFS coarse	RDE fine	RFS coarse	RDE fine	RFS coarse	RDE fine	RFS coarse	RDE fine	RFS coarse	U-Caution	U-Warning	U-Caution	U-Warning			
Iron	D-6595	PPM	24.4	4.1	20.2	2.4	35.2	12.6					>14	>24	>5	>10			
Chromium	D-6595	PPM	1.7	0.6	1.5	0.3	3.0	0.7					>22	>37	>1	>3			
Lead	D-6595	PPM	0.0	2.0	0.0	1.4	0.1	1.0					>1	>2	>3	>5			
Copper	D-6595	PPM	5.2	0.4	3.0	0.2	5.9	1.3	C				>14	>22	>7	>14			
Tin	D-6595	PPM	0.0	0.0	0.0	1.7	0.0	0.0					>1	>2	>1	>2			
Aluminum	D-6595	PPM	2.8	0.8	3.4	0.7	4.4	2.9											
Nickel	D-6595	PPM	1.2	0.3	1.4	0.0	2.6	0.0	W										
Silver	D-6595	PPM	0.0	0.0	0.0	0.0	0.0	0.0											
Molybdenum	D-6595	PPM	0.3	0.4	0.2	0.4	0.0	0.9											
Titanium	D-6595	PPM	0.0	0.2	0.0	0.0	0.0	0.0											
Oil Condition												RO	L-Warning	L-Caution	U-Caution	U-Warning			
Viscosity @ 40°C	D-445	cSt											14.9	<11.9	<12.6	>16.3	>17.1		
Viscosity @ 100°C	D-445	cSt	13.9		13.7		13.1												
Oxidation	FTIR	Abs	11.0		10.8		13.6												
Nitration	FTIR	Abs	9.0		9.2		9.9												
TAN	D-974	mg KOH/g	2.08	C	2.24	C	2.25	C							>2	>3			
TBN	D-4739	mg KOH/g	5.1		5.1		4.2								<2	<4			
Contamination												RO							
Water	FTIR	% (Wt.)	0.083		0.075		0.082								>0.17	>0.24			
Fuel	SAW	% (Wt.)	0.40		0.15		0.13								>3	>5			
Glycol	FTIR	Abs	0		0		0												
Soot	FTIR	% (Wt.)	0.50		0.78		0.75												
Sodium	D-6595	PPM	27		36		57												
Silicon	D-6595	PPM	10.7	5.1	12.5	4.3	18.0	12.7							>20	>30			
Additive Element												RO							
Boron	D-6595	PPM	39		44		45												
Magnesium	D-6595	PPM	14		13		16												
Calcium	D-6595	PPM	1683		1764		1785												
Barium	D-6595	PPM	0		0		0												
Phosphorus	D-6595	PPM	906		850		767												
Zinc	D-6595	PPM	850	90	890	93	855	221											
Additional Test												RO	L-Warning	L-Caution	U-Caution	U-Warning			
Flash Point	D-3828	°C																	
Viscosity Index	D-2270																		

Note: Alarm Limits are variable and dependent upon dataset size and to be used as general guideline.

No Sign or (N) : NORMAL , C or (C) : CAUTION (first level warning limit) , W or (W) : Warning (second level warning limit)

U-Caution : Upper CAUTION Level L-Caution : Lower CAUTION Level  
 U-Warning : Upper WARNING Level L-Warning : Lower WARNING required Level

Baseline will be data of either "The new oil" or "Reference oil" or "Oil specification".

Accuracy of interpretation and recommendation are based on representatives sample and information supplied.

First Level Alarm -Alert Limit in Upper Level and/or Lower Level

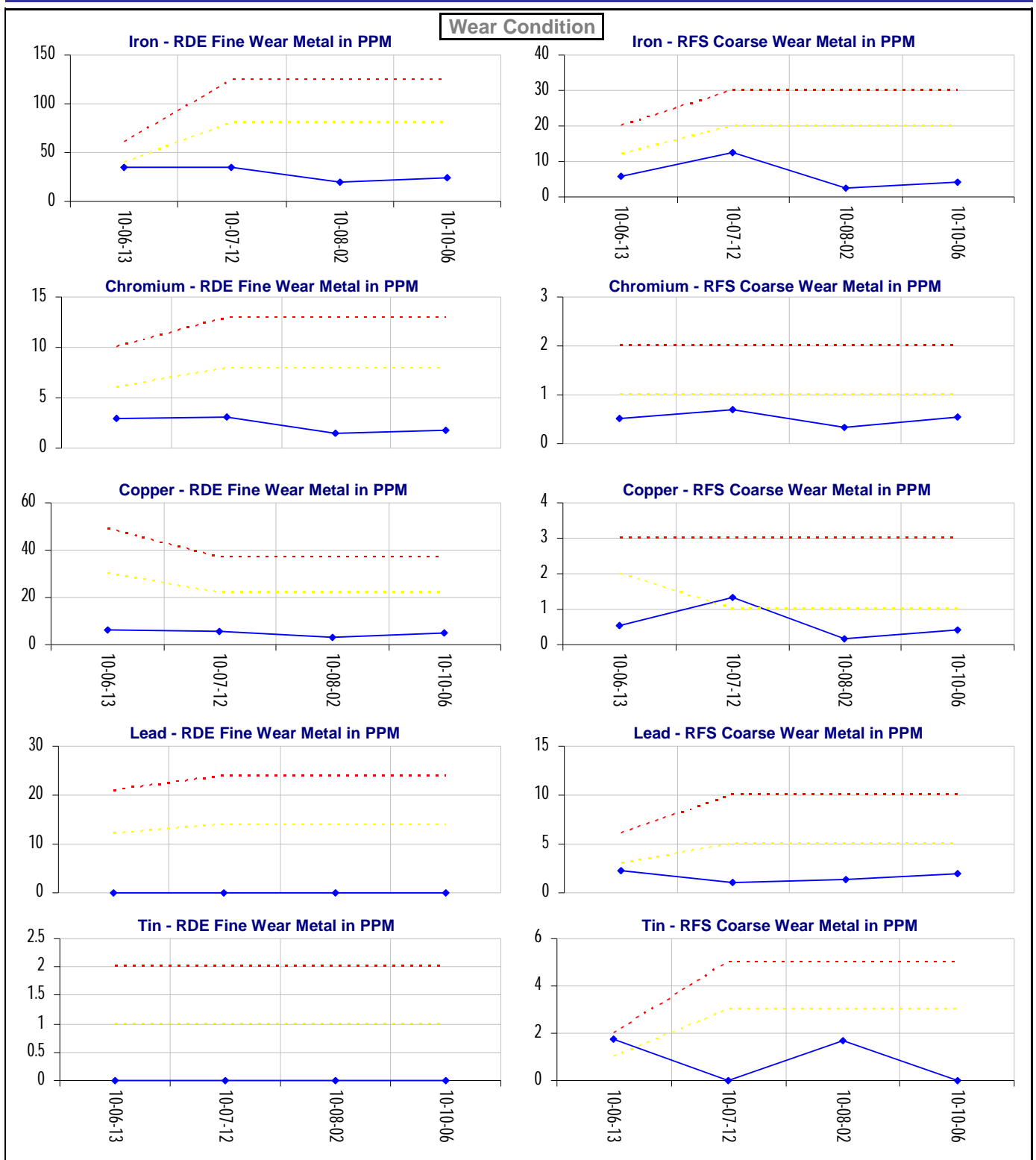
Second Level Alarm -Alert Limit in Upper Level and/or Lower Level

TNO = The new oil , RO = Reference oil , OS = Oil Specification

No warranty is expressed or implied for this report.

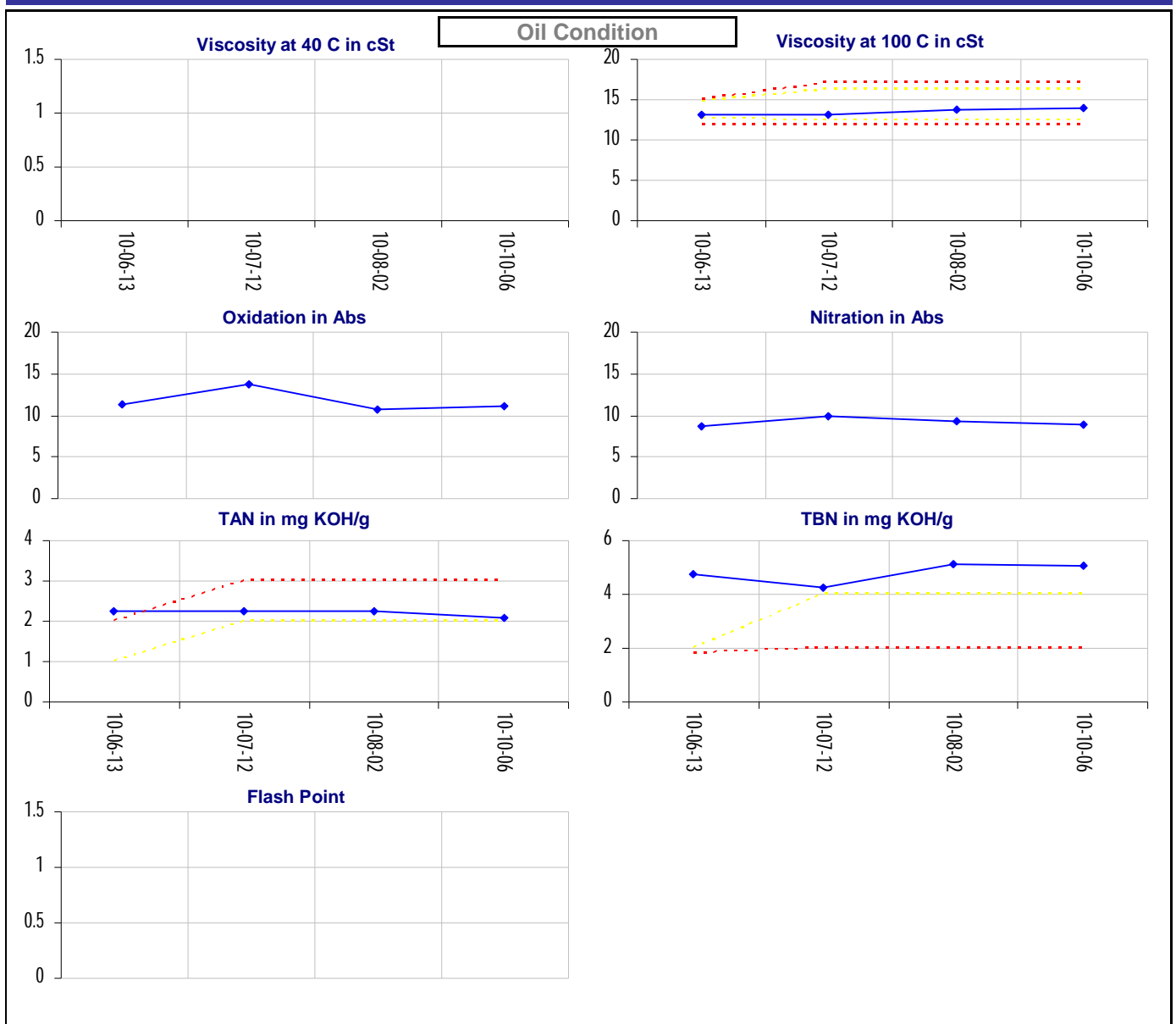
C Code : 25046  
 U Name :  
 S Address : 108 Moo 2, Vibhavadi-Rangsit Road  
 T Chatuchak Bangkok 10900  
 O M  
 E R Site :  
 Location :  
 Test code : 804 907

E Unit ID : T250 CNG LUX AT  
 O Unit Type : Engine NGV Spark  
 I Unit Make : CHEVROLET  
 P Unit Model : OPTRA CNG 1.6L  
 M  
 E Oil type / Viscosity : GM TECH SSS SAE 5W40  
 N  
 L Oil System Capacity : 3.8 Liters



C Code : 25046  
 U Name :  
 S Address : 108 Moo 2, Vibhavadi-Rangsit Road  
 T Chatuchak Bangkok 10900  
 O  
 M  
 E R Site :  
 Location :  
 Test code : 804 907

E Unit ID : T250 CNG LUX AT  
 O Unit Type : Engine NGV Spark  
 I Unit Make : CHEVROLET  
 P Unit Model : OPTRA CNG 1.6L  
 M  
 E  
 N  
 T Oil type / Viscosity : GM TECH SSS SAE 5W40  
 L Oil System Capacity : 3.8 Liters



C Code : 25046  
 U Name :  
 S Address : 108 Moo 2, Vibhavadi-Rangsit Road  
 T Chatuchak Bangkok 10900  
 O M  
 E R Site :  
 Location :  
 Test code : 804 907

E Unit ID : T250 CNG LUX AT  
 O Unit Type : Engine NGV Spark  
 U Unit Make : CHEVROLET  
 I Unit Model : OPTRA CNG 1.6L  
 P  
 M  
 E  
 N  
 T  
 Oil type / Viscosity : GM TECH SSS SAE 5W40  
 Oil System Capacity : 3.8 Liters

