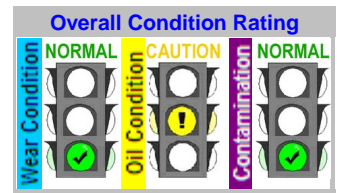


C Code : 28053
 U Name :
 T
 O Address : Maintenance Project
 R Main Workshop Building, Depot Area
 Rama IX Road, Huay Kwang
 Site : 001
 Location : 3001
 Test code : 804

Unit ID : 120 3024
 Unit Type : Compressor Air
 Unit Make : KNORR
 Unit Model : W120
 Oil type / Viscosity : SHELL CORENA P100
 Oil System Capacity : 3.7 Liters



Notes (Finding, Evaluation, Interpretation, Suggestion and Recommendation)

Oil condition tests indicate that the oil is slightly degraded.
 All wear conditions and wear tests appear in normal working range.
 All contaminant conditions and contaminant levels appear in normal ranges.
 Continue routine sampling interval.

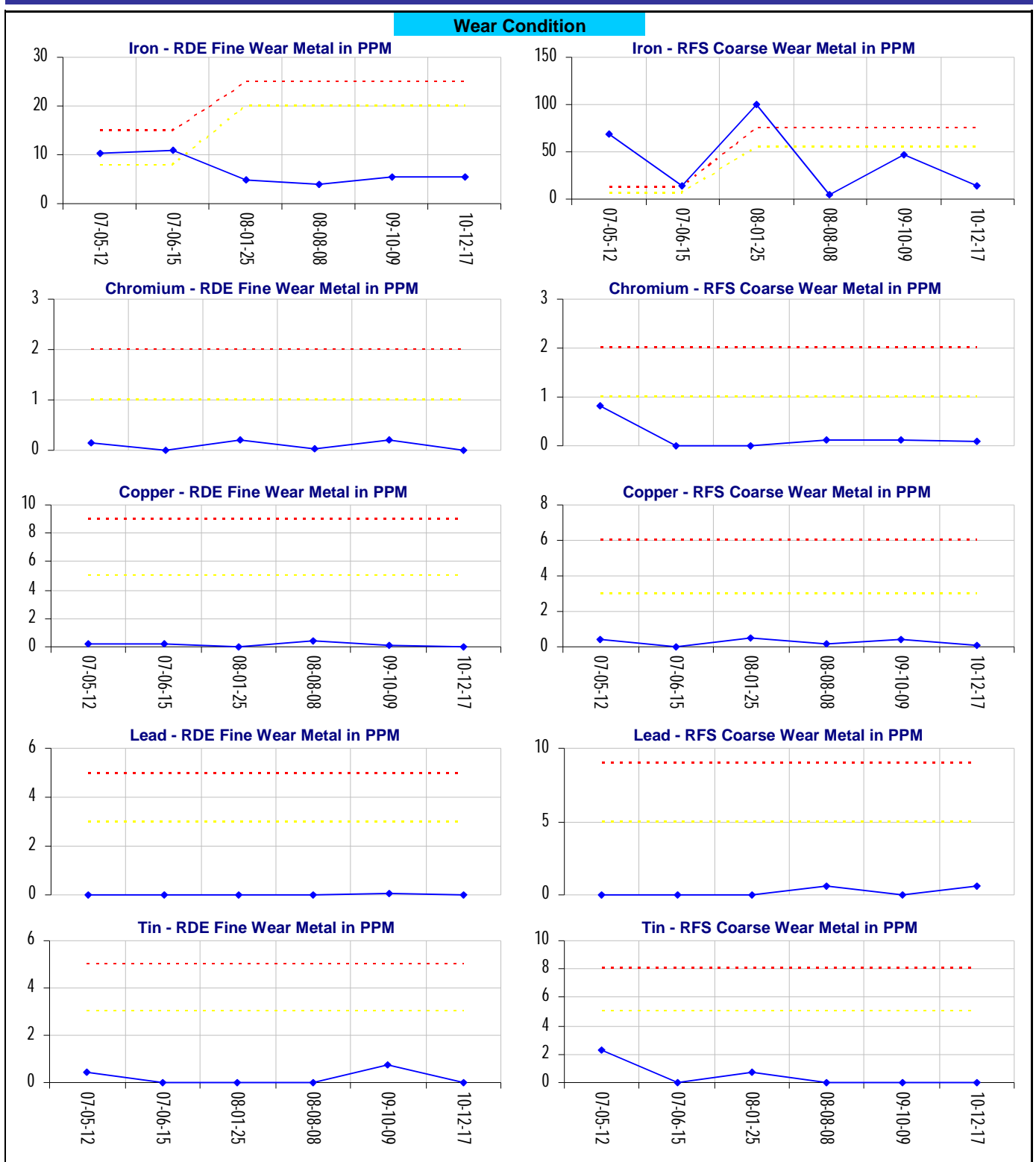
Somchai J / Andy Siltton

			Current Sample			Previous Sample			Baseline and Alarm Limit								
Condition History			Wear	Oil	Cont.	Wear	Oil	Cont.	Wear	Oil	Cont.	Alarm Limit					
			N	C	N	N	C	W	N	N	N	Alarm Limit Matrix - Set Name (Equipment type / oil type)					
												Comp Air Knorr Corena P100					
												RDE fine RFS coarse					
												Reference Oil (RO)	U-Caution	U-Warning	U-Caution	U-Warning	
Lab ID	Test Method	Result	N	C	N	N	C	W	N	N	N						
Bottle ID			150437	924730	121920	902630	98593										
Date Sampled			17-Dec-10	09-Oct-09	08-Aug-08												
Oil Hours (Kms)			181615 kms	177395 kms	66106 kms												
Unit Hours (Kms)			1078698 kms	897083 kms	719688 kms												
Filters Hours (Kms)			3.7														
Wear Condition												Reference Oil (RO)	RDE fine		RFS coarse		
Wear Element	Method	Unit	RDE fine	RFS coarse	RDE fine	RFS coarse	RDE fine	RFS coarse									
Iron	D-6595	PPM	5.6	13.7	5.6	47.0	3.8	5.0	0	>20	>25	>55	>75				
Chromium	D-6595	PPM	0.0	0.1	0.2	0.1	0.0	0.1	0	>1	>2	>1	>2				
Lead	D-6595	PPM	0.0	0.6	0.1	0.0	0.0	0.6	0	>3	>5	>5	>9				
Copper	D-6595	PPM	0.0	0.1	0.2	0.4	0.4	0.2	0	>5	>9	>3	>6				
Tin	D-6595	PPM	0.0	0.0	0.7	0.0	0.0	0.0	0	>3	>5	>5	>8				
Aluminum	D-6595	PPM	0.3	1.1	0.9	8.7	0.0	0.0	0	>1	>2	>10	>15				
Nickel	D-6595	PPM	0.6	0.0	0.2	0.5	0.2	1.3	0	>2	>3	>2	>3				
Silver	D-6595	PPM	0.0	0.0	0.0	0.0	0.0	0.0	0								
Molybdenum	D-6595	PPM	0.0	0.0	0.0	0.0	0.0	8.5	0								
Titanium	D-6595	PPM	0.0	0.3	0.0	0.0	0.0	0.0	0								
Oil Condition												RO	L-Warning	L-Caution	U-Caution	U-Warning	
Viscosity @ 40°C	D-445	cSt	108.8		108.9	C	106.7		104.0	<93.6	<98.8	>109.2	>114.4				
Viscosity @ 100°C	D-445	cSt															
Oxidation	FTIR	Abs	4.1	C	2.8		3.1		3.0			>3.7	>6				
Nitration	FTIR	Abs	5.4	C	5.0	C	4.3		4.0			>5	>8				
TAN	D-974	mg KOH/g	0.30		0.27		0.30		0.10			>0.6	>1.1				
TBN	D-4739	mg KOH/g															
Contamination												RO	RDE fine		RFS coarse		
Water	T-H2O Check™	% (Wt.)	0.014		0.123	W	0.012		0.010			>0.05	>0.07				
Sodium	D-6595	PPM	1		1		1		1								
Silicon	D-6595	PPM	0.8	0.6	2.6	11.0	W	0.6	2.9	1	>7	>12	>6	>10			
Additive Element												RO					
Boron	D-6595	PPM	0		0		0		0								
Magnesium	D-6595	PPM	1		1		1		0								
Calcium	D-6595	PPM	43		47		69		50								
Barium	D-6595	PPM	4		0		0		0								
Phosphorus	D-6595	PPM	155		124		168		150								
Zinc	D-6595	PPM	199	196	196	336	220	19	200								
Additional Test												RO	U-Caution	U-Warning	U-Caution	U-Warning	
Flash Point	D-3828	°C															
Viscosity Index	D-2270																

Note: Alarm Limits are variable and dependent upon dataset size and to be used as general guideline.
 No Sign or **N** : NORMAL, **C** or **C** : CAUTION (first level warning limit), **W** or **W** : Warning (second level warning limit)
 U-Caution : Upper CAUTION Level, L-Caution : Lower CAUTION Level, First Level Alarm, Alert Limit in Upper Level and/or Lower Level
 U-Warning : Upper WARNING Level, L-Warning : Lower WARNING required Level, Second Level Alarm, Alert Limit in Upper Level and/or Lower Level
 Baseline will be data of either "The new oil" or "Reference oil" or "Oil specification". TNO = The new oil, RO = Reference oil, OS = Oil Specification
 Accuracy of interpretation and recommendation are based on representatives sample and information supplied. No warranty is expressed or implied for this report.

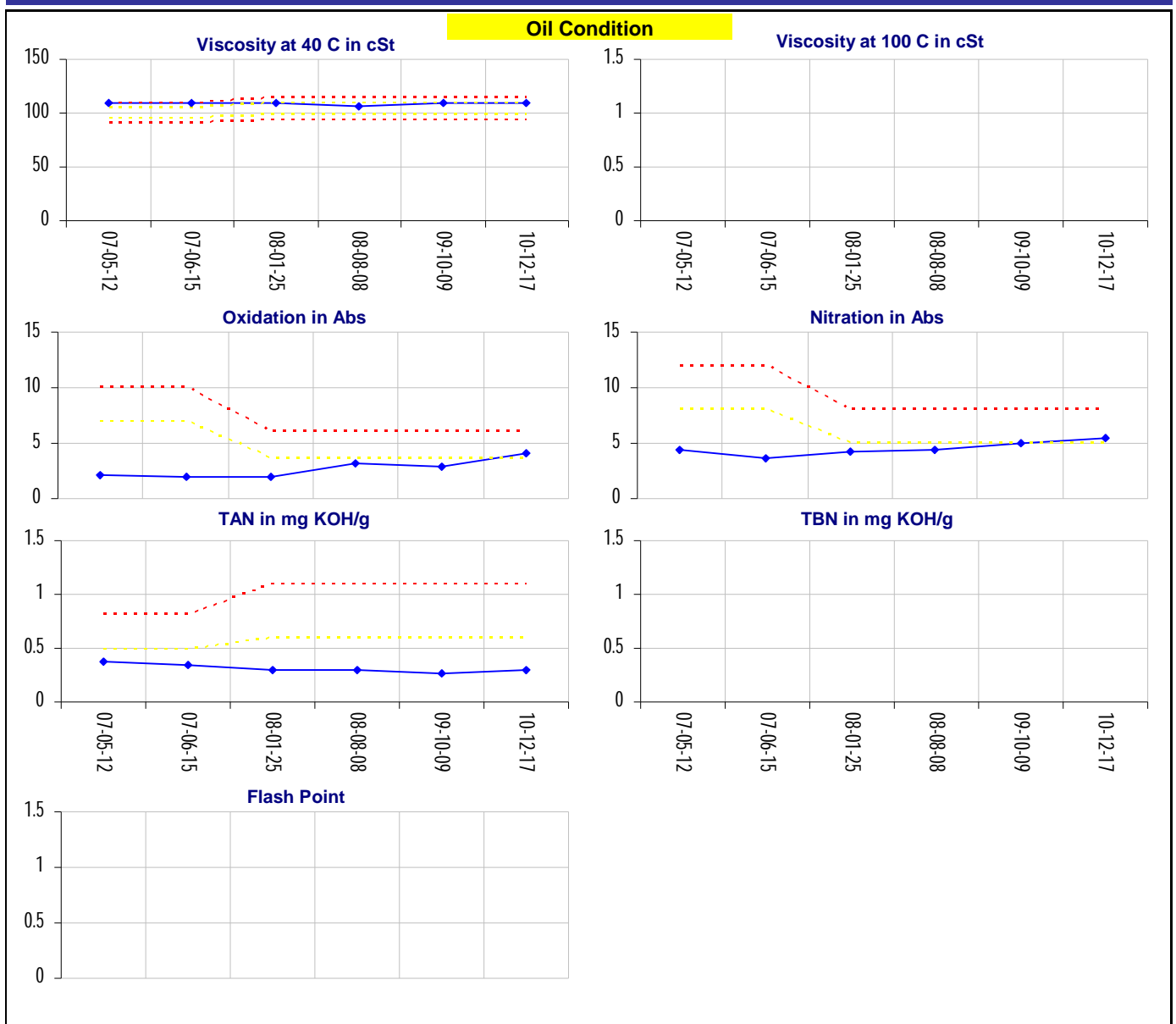
C Code : 28053
 U Name :
 S Address : Maintenance Project
 T Main Workshop Building, Depot Area
 O Rama IX Road, Huay Kwang
 M Site : 001
 E Location : 3001
 R Test code : 804

E Unit ID : 120 3024
 O Unit Type : Compressor Air
 I Unit Make : KNORR
 P Unit Model : W120
 M Oil type / Viscosity : SHELL CORENA P100
 E
 N
 T
 L Oil System Capacity : 3.7 Liters



C Code : 28053
 U Name :
 T Address : Maintenance Project
 O Main Workshop Building, Depot Area
 M Rama IX Road, Huay Kwang
 E Site : 001
 R Location : 3001
 Test code : 804

E Unit ID : 120 3024
 O Unit Type : Compressor Air
 U Unit Make : KNORR
 I Unit Model : W120
 P Oil type / Viscosity : SHELL CORENA P100
 M
 E
 N
 T
 L Oil System Capacity : 3.7 Liters



C Code : 28053
 U Name :
 S Address : Maintenance Project
 T Main Workshop Building, Depot Area
 O Rama IX Road, Huay Kwang
 M Site : 001
 E Location : 3001
 R Test code : 804

E Unit ID : 120 3024
 O Unit Type : Compressor Air
 I Unit Make : KNORR
 P Unit Model : W120
 M Oil type / Viscosity : SHELL CORENA P100
 E
 N
 T
 L Oil System Capacity : 3.7 Liters

